

WELCOME TO RECEPTION



KEY MEMBERS OF STAFF



Mr Davies

Headteacher



Mrs Rindsland

Deputy
Headteacher/EYFS
Leader



Mrs Coady

Deputy
Headteacher/SENCO

TURTLE CLASS



Mrs Muller

LSA



Miss Levett

Class Teacher



Miss Birch

NNEB

DOLPHIN CLASS



Mrs Muller

LSA



Miss Birdseye

Class Teacher



Mrs Lhafidhi

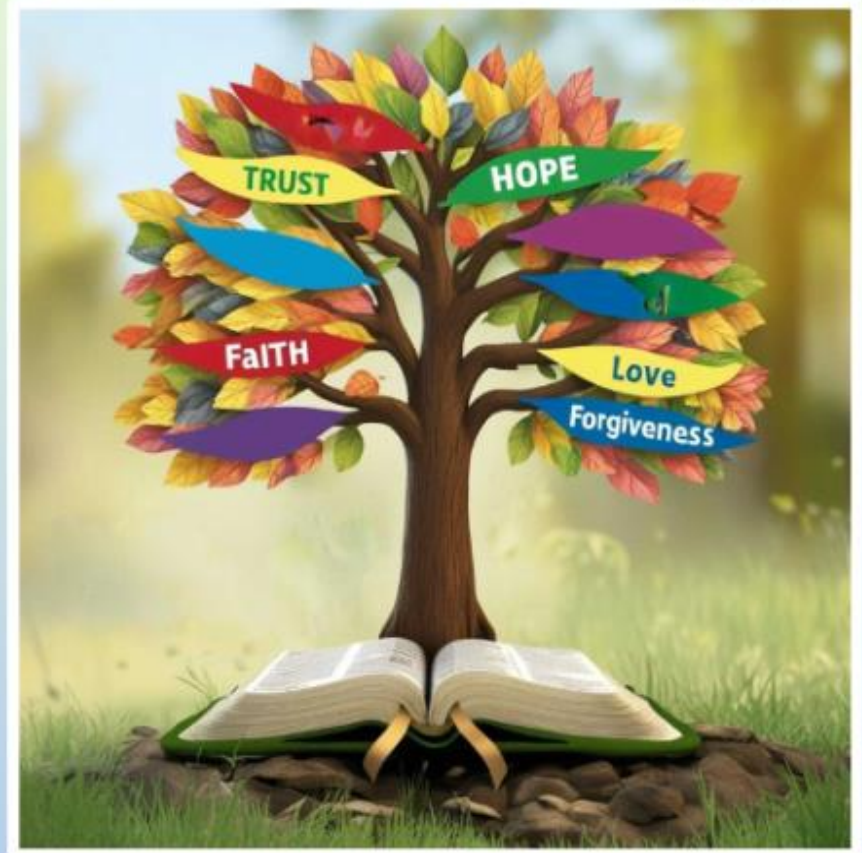
Class LSA

OUR SCHOOL VISION



**"For I know the plans I have for you," declares the Lord,
"plans to prosper you and not to harm you,
plans to give you hope and a future."**

Jeremiah 29:11



Empowering minds with a foundation rooted in faith, our school embraces Jeremiah. Grounded in love and biblical teachings, we prepare children for purposeful lives. We aim to guide everyone towards fulfilling their God-given potential, to flourish academically, and embrace a future filled with hope. Journeying together; trusting in a limitless future.

Rooted in faith. Learning with love. Creating a bright future.

TRANSITION INTO RECEPTION



A smooth transition into Reception is so important for the wellbeing of your child.

To ensure each child feels as settled as possible, we have a staggered starting date and progression into full time school.

This allows your child to adapt to being at school full time at a steady pace.

We understand this is an emotional time and a big life change for adults and children, please support your child by explaining what an exciting time this is.

WHEN DOES MY CHILD START SCHOOL?



- Each child will be allocated a class and a start date. Start dates will vary for each child. This information will be emailed to you.
- School starts at 8.40am
- The weeks of the Thursday 4th and Monday 8th September, children will be attending school from 8.40am-12.30pm and will be having lunch at school. If your child previously attended our nursery 30-hour provision or 30-hours in another setting they will stay at school until 3.10pm.
- For the next **2 weeks (Monday 15th September to Friday 26th September)** they will attend school from 8.40am-1.15pm. This will give them a chance to have playtime after lunch and get used to the routine.
- **Turtle Class and Dolphin class** from the decking door.
- **Turtle Class** will be collected from the side door.
- **Dolphin Class** will be collected from the decking door.
- On their first day, staff will be available to guide you to the correct place.
- From **Monday the 29th of September** all children will attend full time from 8.40am until 3.10pm.

SNACK TIME



Fruit

There is always a piece of fruit available throughout the school day.



Milk

Milk is available free for under 5's by registering on www.coolmilk.com/register and can be paid for thereafter.

LUNCHTIME

Your child has two choices for lunch.



A free school dinner

This includes a meat option, vegetarian option, pasta, jacket potato or sandwich option plus a dessert and fresh fruit.

OR

A healthy packed lunch



BREAKFAST CLUB

Breakfast club is available for Reception children from October, following half term, as long as they are well settled in their class.

Usually breakfast club is available everyday from 7.30 am for £2 per day.

This is a pre-booked club that can be booked via ParentPay. A form can be requested from the office and needs to be completed and returned prior to your child starting. Additional information on how to book with then follow.



AFTER SCHOOL CLUB WITH SCHOOL FRIENDS

Children can start after school club once they are in full time school.

This runs from after school until 6pm.

This is booked via School Friends, details are in your pack.



SCHOOL UNIFORM



- Grey skirt or pinafore dress or grey trousers (long or short trousers)
- Maroon jumper, cardigan or school sweatshirt
- White shirt
- School tie
- White, grey or black socks or tights
- Blue and white check summer dress
- Flat black or brown shoes
- **Book bags and pack lunch boxes ONLY, NO BACKPACKS**
- **Open sandals, boots and black trainers are not allowed.**

PLEASE LABEL YOUR CHILDREN'S CLOTHES!

UNIFORM - WHERE TO ORDER

- Uniform should be ordered from our online shop which can be found here: <https://www.pbuniform-online.co.uk/cowley>
- A link is also available on our school website. Click on the 'Information' tab and then 'uniform'.



PLEASE LABEL YOUR CHILDREN'S CLOTHES!



SCHOOL P.E KIT

BOYS AND GIRLS

- Black plimsolls
- Maroon shorts
- Blue school t-shirt
- **No Jewellery**



PLEASE LABEL YOUR CHILDREN'S CLOTHES!

MISPLACED ITEMS

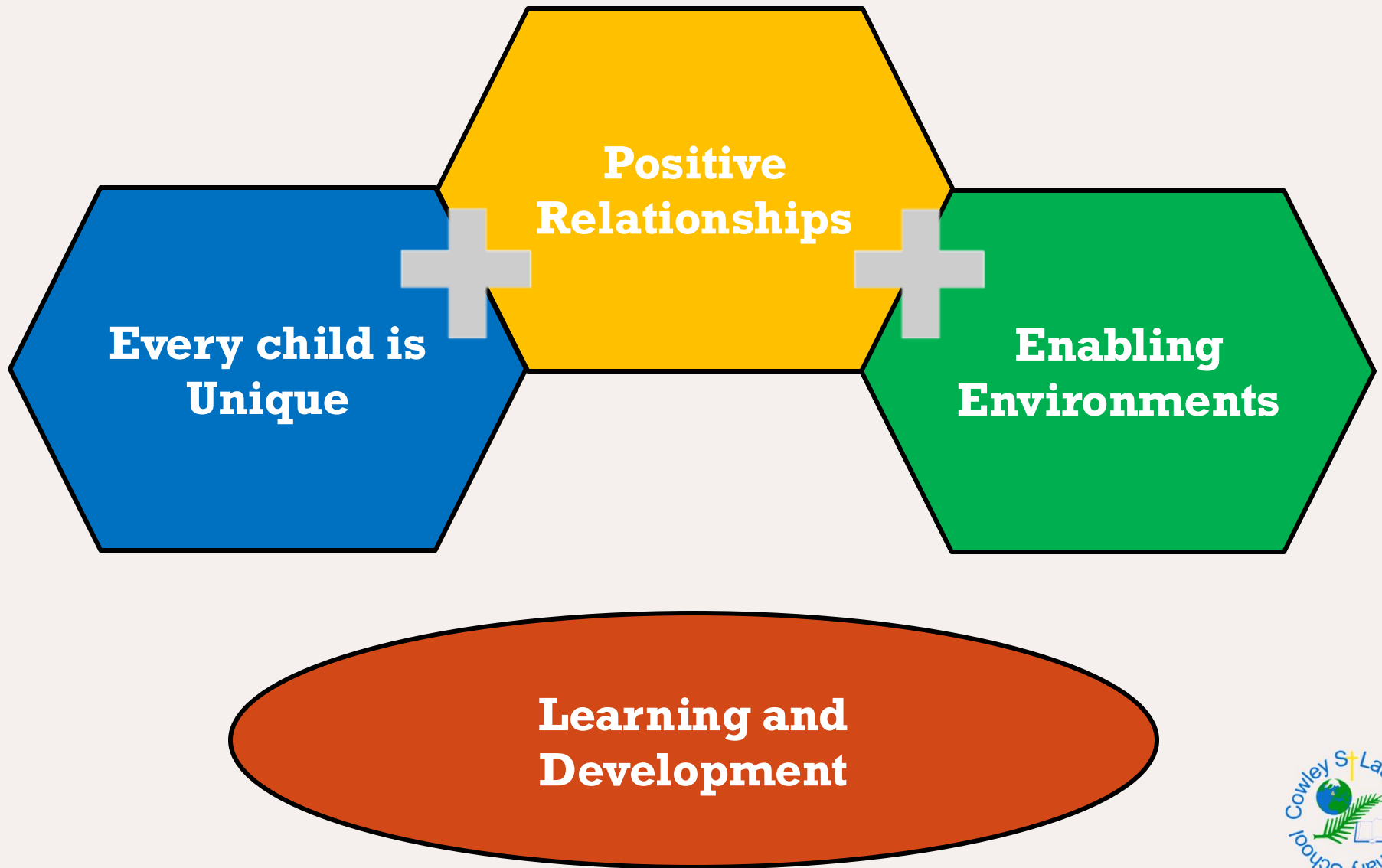


PLEASE LABEL YOUR CHILDREN'S CLOTHES!

During the day, children often get hot and take their jumpers off and will often forget where they have put them.

To ensure that your children's clothes can be identified when misplaced, please label them before their first day at school!

TEACHING AND LEARNING IN RECEPTION



AREAS OF LEARNING



OUR LAST OFSTED REPORT SAID;

Children in the Reception and Nursery class learn in a space designed to foster their independence. Adults are skilled in promoting children's language development. They provide rich opportunities for children to build up their vocabulary and explore the world around them, from melting blocks of ice to hatching ducklings.

The early years curriculum is planned to provide children with the foundations they need for their learning in all subjects. For example, children gain a strong understanding of number through a range of well-planned activities.

OUR CLASSROOM RULES AND BEHAVIOUR POLICY

We have high expectation for children's behaviour and development of personal, social and emotional skills.

- Kind hands
 - Kind words
 - Try your best
- =
- Positive praise
 - Stickers
 - Prizes

Talking to an adult, thinking time, fix it conversation,



A TYPICAL DAY IN RECEPTION



The children start every morning with self-registration and morning activity. During the course of the morning, they will have a Phonics lesson, Maths lesson and Speaking and Listening focus as well as time to explore and play in the environment.

At lunchtime, the children will eat their lunch in the school hall and will then have time to play on the EYFS playground.

After lunch, children will take part in knowledge lessons which support them in developing their understanding of the world through science, history, geography, RE and art and design focuses. They will also take part in weekly PE and Music lesson.

Most importantly, the children have fun whilst they learn and there are lots of opportunities to speaking about their learning and to explore new ideas and stimulus.

PHONICS



We teach children to read through a programme called Read Write Inc. (RWI).

The children learn sounds and the letters that represent them, and how to form the letters.

As your children learn the single letter sounds they will be given flash cards to practise with at home. We will also send you QR codes to access RWI teaching videos to support you with practising these sounds with your child at home.

By half term, your child should know all of these sounds and be able hear words that are spoken to them in Fred talk eg. m-a-t.



LEARNING THEMES

Autumn Term

All About Us

Feelings and Emotions
Manners
Making Friends
Self-Care
Personal Safety and Consent
Special Occasions
My Family
Cultures
Animals
Being Safe Around Animals
Days, Months and Seasons
Weather
Colours
Emergency Situations
Jobs

Spring Term

All Around Us

Homes and Houses
Emergency Situations
Time
Transport
Crossing the Road
Safety Out and About
Personal Safety and Consent
Animals
Begin Safe Around Animals
Jobs
Money
My Body and senses
Day and Night
Growing
Plants and Animals
Dental Hygiene
Healthy Eating
Days, Months and Seasons
Weather

Summer Term

All Around Our World

Forces
Planet Earth
Transport
Caring for our Planet
Weather
Changes in State
Daytime and Night
Animals
Animal Conservation
Money
Clothing
Cultures
Days, Months and Seasons
Weather
Prehistoric Animals
Jobs
The Solar System

READING RECORDS



Every week, your child will be bringing home 2 books.

One will be a phonics resource and/or book.



One will be a story book of their choice.



They will have the chance to change their story book as often as they like and their phonics books will be changed once we have assessed that they are able to confidently read all of the words.

We would love for **YOU** to read a book to your child as well as listening to them read so they can hear how stories should be read.



READING RECORDS



At Cowley, we believe that reading is a vital skill for a child's development.

We will be expecting to see these reading records returned back to school **every day** with a comment on how your child has read the book accompanied with signature by a parent.

When children learn to read at an early age, they have greater general knowledge, expand their vocabulary and become more fluent readers. They also have improved attention spans and better concentration.

Lost books incur a charge which will be put on your Parent pay account. A new book will be issued once charge is paid.



HOW YOU CAN HELP



- Talk to your child.
- Work in partnership with your class teacher, speaking to us regularly – everyone wants your child to be happy and successful in school.
- Maintain excellent attendance and punctuality- this is vital if children are to succeed.
- Attend all meetings and events.
- Read the ‘Friday News’ and check our website regularly for any updates or information.
- Join our Facebook page where updates and news is updated regularly.
- Ensure your contact details are up to date.
- Highlight any concerns to your class teacher or the phase leader.
- Promote independence.
- Support your child in their homework, including reading with your child every day.

RECEPTION 'READINESS'

We want children to be as independent as possible to maximise their learning potential.

During the summer break, you will have the perfect opportunity to help prepare your children for Reception. For e.g.

- Recognising how to read and write their name.
- Getting dressed by themselves.
- Being confident with asking to use the toilet.
- Using the toilet independently.
- Understanding the importance of being hygienic i.e washing their hands, using a tissue for sneezing or blowing their nose.
- Tying their laces. (or Velcro shoes)
- Opening and closing buttons and zips.
- Asking for help when they need.



FUNDING FOR SCHOOLS

The UK government has dedicated funding for schools to buy exciting new resources... but we need information from you in order to receive it.

Please can we ask that every parent/guardian checks their eligibility. If you are receiving any child tax credits, allowances or additional financial help we would love your support.

You can check your eligibility by clicking here:

<https://pps.lgfl.org.uk/>



MEDICAL MATTERS



- The school must be notified of ALL absences via telephone, with an explanation. (either prior to absence or on the day of absence)
- There are 3 dedicated absence reporting numbers which will be sent to you via Parent Mail and are also detailed in your pack.
- Keep the school informed of any up to date allergy information.
- Regularly check all medicines and inhalers are in date.
- Any sickness must be followed by 24 hours absence and diarrhoea by 48 hours absence.
- Head lice are common! Please check regularly and treat as recommended.
- Medicines can only be administered if pre-arranged and approved by the school.

COMMUNICATION FROM SCHOOL

How many times have you found information from school as a crumpled mess at the bottom of your child's bag? As a school we are very aware of the 'Need to be Green!' A simple way to have a huge impact on the environment is through reducing paper consumption by changing our paper letters into emails and online information. This method will cut out the middleman and enable our school to communicate directly and instantly with you.

How will we receive information?

It's Time To Go Paperless.



Facebook

Join our private group **Cowley St Laurence School** to find out information, keep in touch and see photos of what's been going on!



Parentmail

All letters and Newsletters will be sent via email. Please see the office to check that your email is correct on the school system.



Website

All information about the school can be found here including Newsletters, policies etc. Updates are added when necessary.



ParentPay

This is our online payment system for all payments eg trips, dinners etc. Please see the office if you need help setting up your account.

Get online to prevent missing out on vital information



PARENT MAIL



- Once your child has started with us you will be invited to join Parent Mail. Please do this immediately as all important information is sent this way.
- If you have any questions please do e-mail us at cowleystl@fraysacademytrust.org

ADMISSIONS BOOKLETS



- Please fill in today and hand back.
- If this is not possible please ensure that it is returned to the office by **WEDNESDAY 16TH JULY 2025.**